



## CUSTOM CHARLESTON MODEL

25'-0" X 37'-0"

### SPECIFICATIONS

#### Dimensions:

Roof Dimensions, point to point	±25'-0" x 37'-0"
Frame Dimensions	21'-1 3/4" x 20'-4 1/8"
Minimum Clearance	10'-0"
Roof Height @ Peak	±15'-8 1/2"
Hip Roof	4:12 pitch
Square Feet Under Roof	±744.6

Columns shall be 7" x 7" steel tube, .188 minimum wall thickness.

All columns & beams shall be structural steel tube sized according to engineering.

All bolts shall be A-307 or A-325 and hidden at all connections.

Roofing shall be 24 gauge 12" OC Standing Seam steel pre-cut and pre-finished with ribs running with the slope of the roof.

Trim shall be 24 gauge pre-finished to match roofing.

Fascia shall be tube steel with tension rings at each corner.

Open or welded "C" channels, "I" beams, "S" or "Z" purlins or angle iron shall not be allowed.

11875 East Berry Drive, Dewey, Arizona 86327

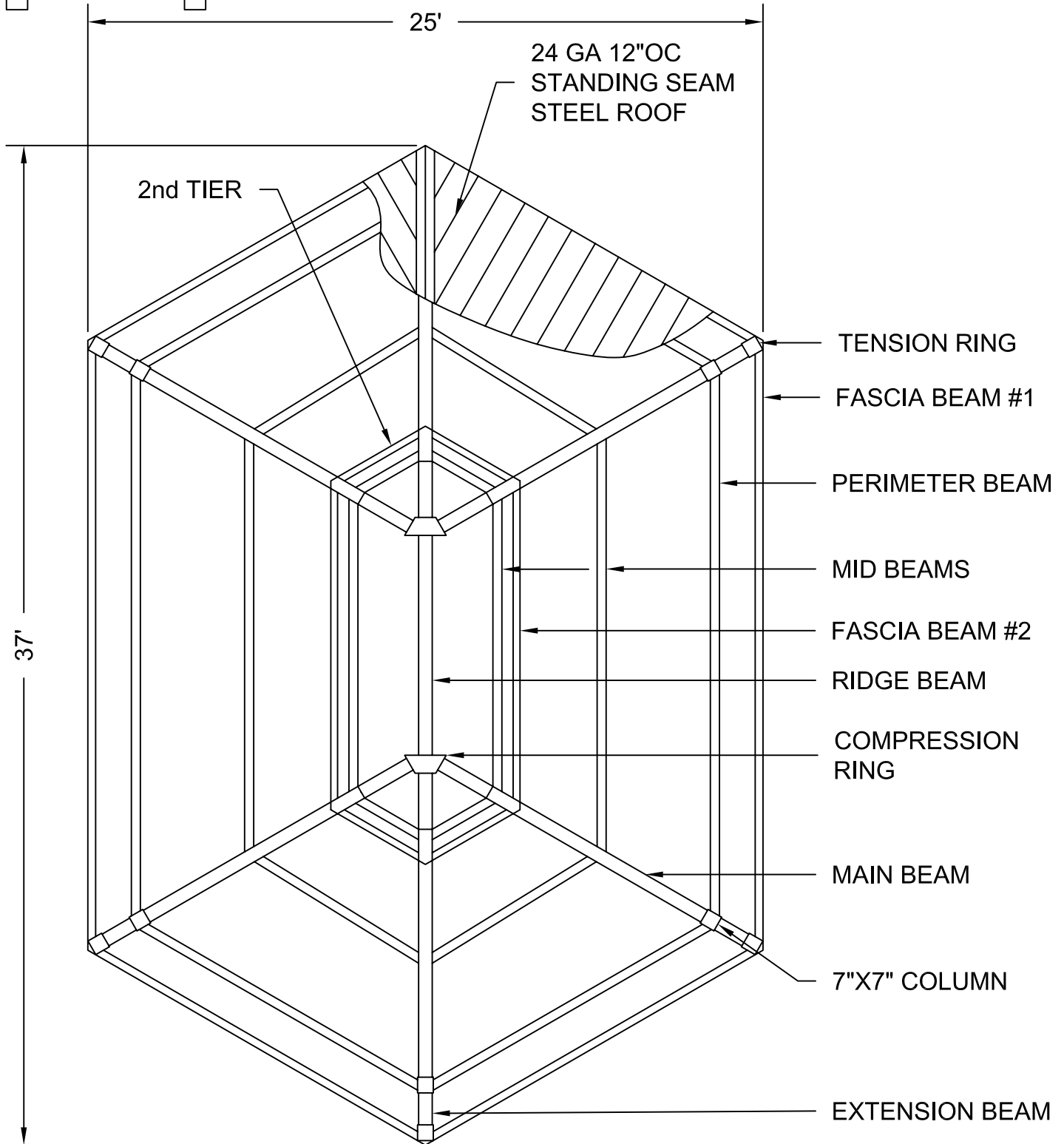
Phone: (928) 775-3307 Fax: (928) 772-0858

[info@classicrecreation.com](mailto:info@classicrecreation.com)

[www.classicrecreation.com](http://www.classicrecreation.com)



NOT FOR CONSTRUCTION

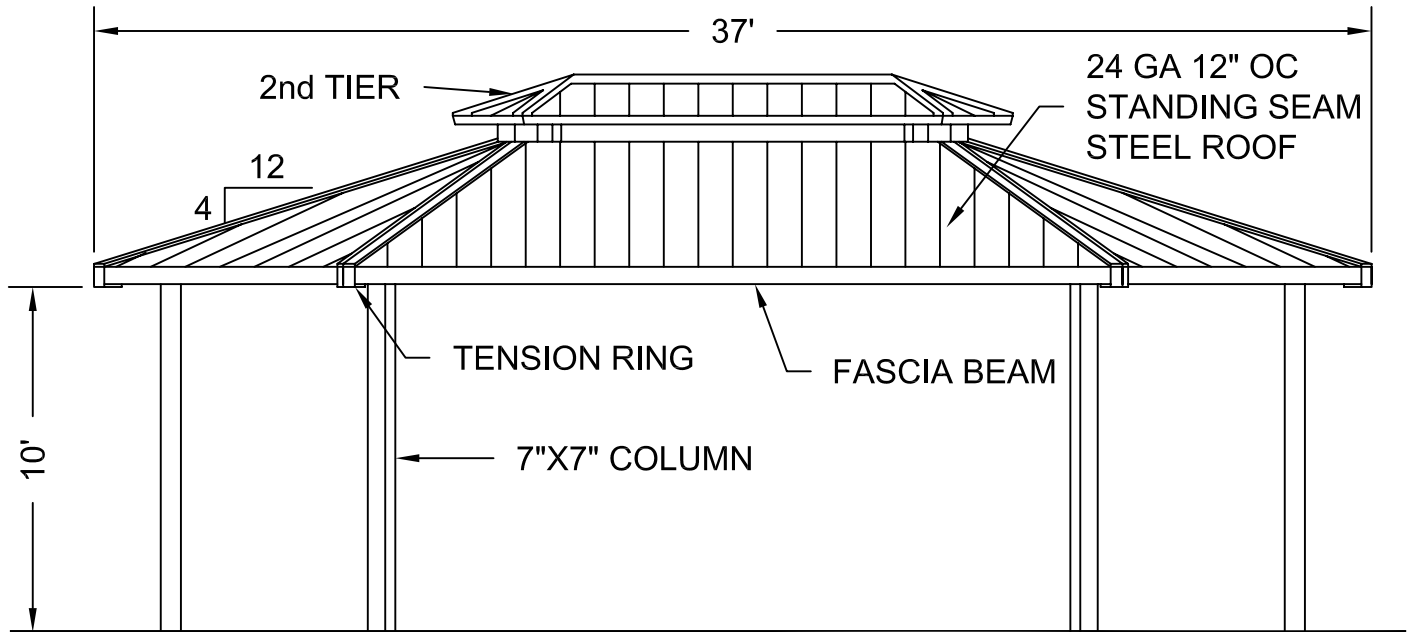


PLAN VIEW 25'X37' CUSTOM CHARLESTON MODEL

NTS

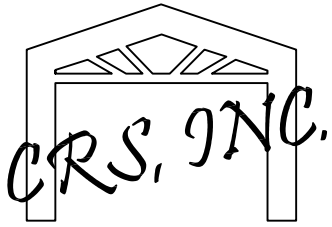


NOT FOR CONSTRUCTION

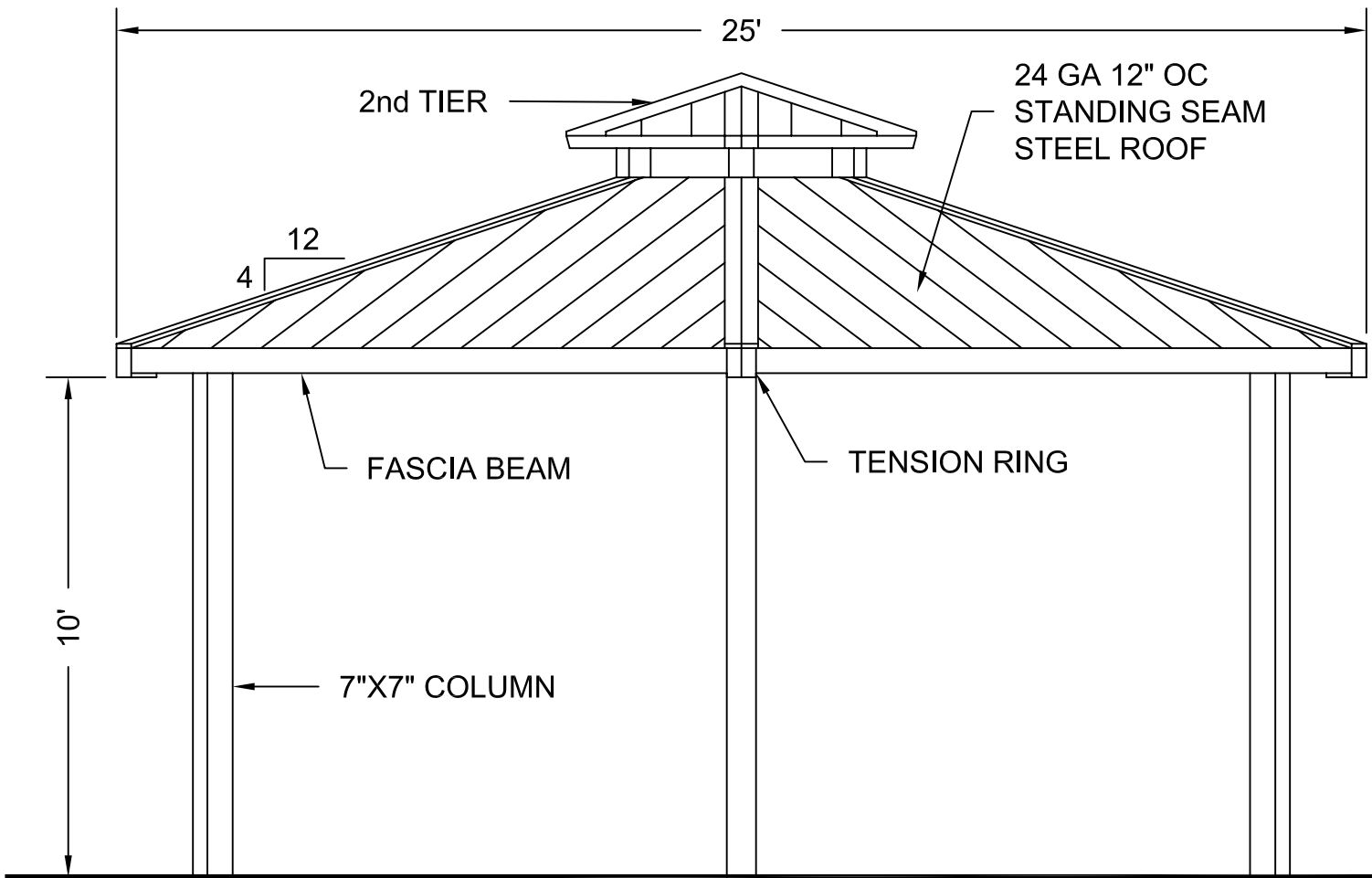


ELEVATION 25'X37' CUSTOM CHARLESTON MODEL

NTS

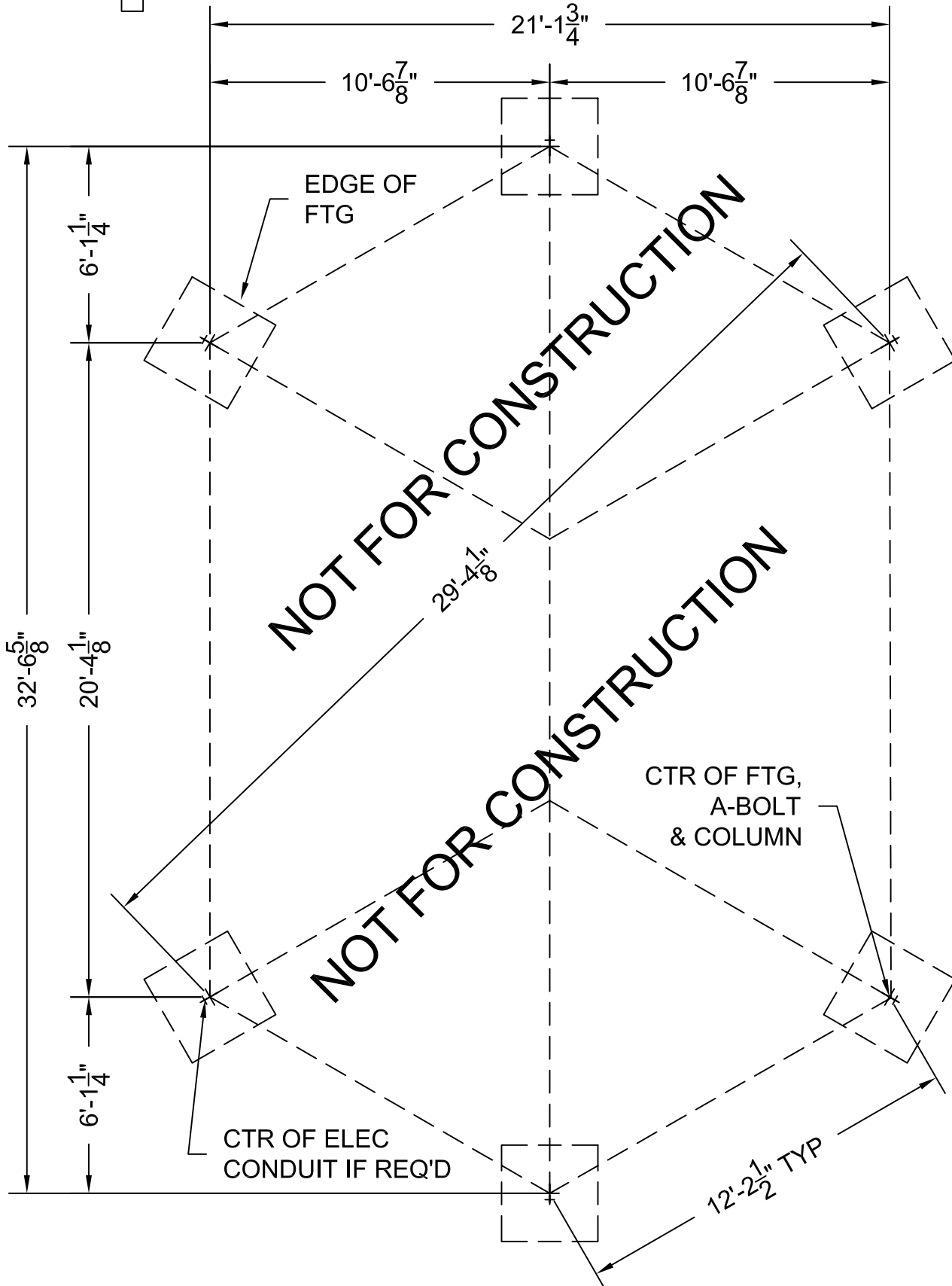
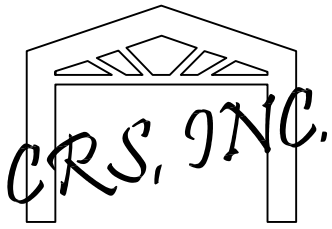


NOT FOR CONSTRUCTION



END ELEVATION 25'X37' CUSTOM CHARLESTON MODEL

NTS



LAYOUT PLAN 25'X37' CUSTOM CHARLESTON MODEL  
NTS



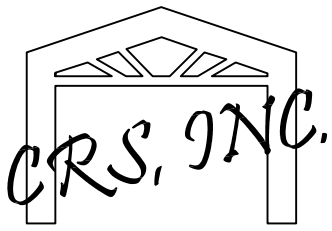
Diagram illustrating the components and dimensions of a 7"X7" COLUMN BASE PLATE:

- ELEC CONDUIT
- A-BOLT HOLE
- 7"X7" COLUMN
- BASE PLATE

Dimensions shown:

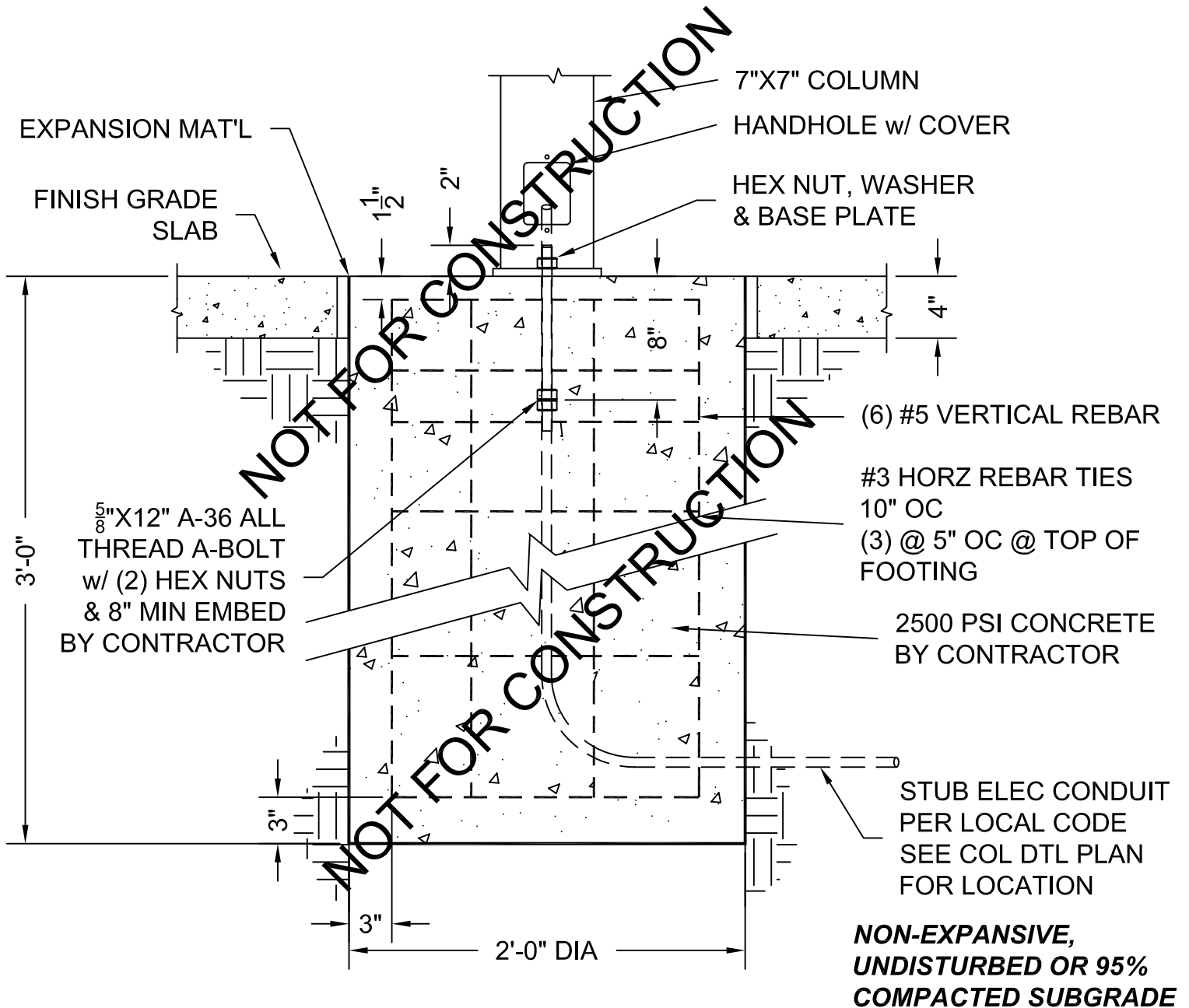
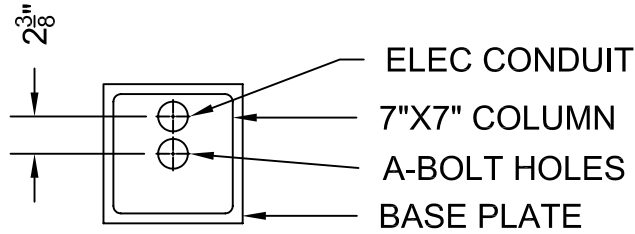
- Overall width: 2'-0"
- Overall height: 2'-0"





NOTE: FOR ILLUSTRATION ONLY!  
FOOTING SIZE MAY CHANGE w/  
STRUCTURAL ENGINEERING

ADJUST FTG DEPTH FOR  
LOCAL FROST CONDITIONS



SURFACE MOUNT CAISSON FOOTING  
25'X37' CUSTOM CHARLESTON MODEL<sub>NTS</sub>