



MESA MODEL

30' X 30'

SPECIFICATIONS

Dimensions:

Roof Dimensions	30'-0" x 30'-0"
Column Dimensions	21'-4" x 21'-4"
Minimum Clearance	8'-6"
Roof Height @ Peak	±12'-4"
Hip Roof	4:12 pitch
Square Feet Under Roof	900

Columns shall be 10" x 10" steel tube, minimum .188 wall thickness.

Column surrounds shall be by others.

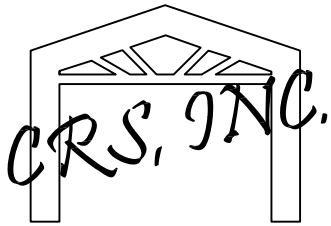
All beams shall be structural steel tube sized according to engineering.

All bolts shall be A-325 or A-307 and hidden at all connections.

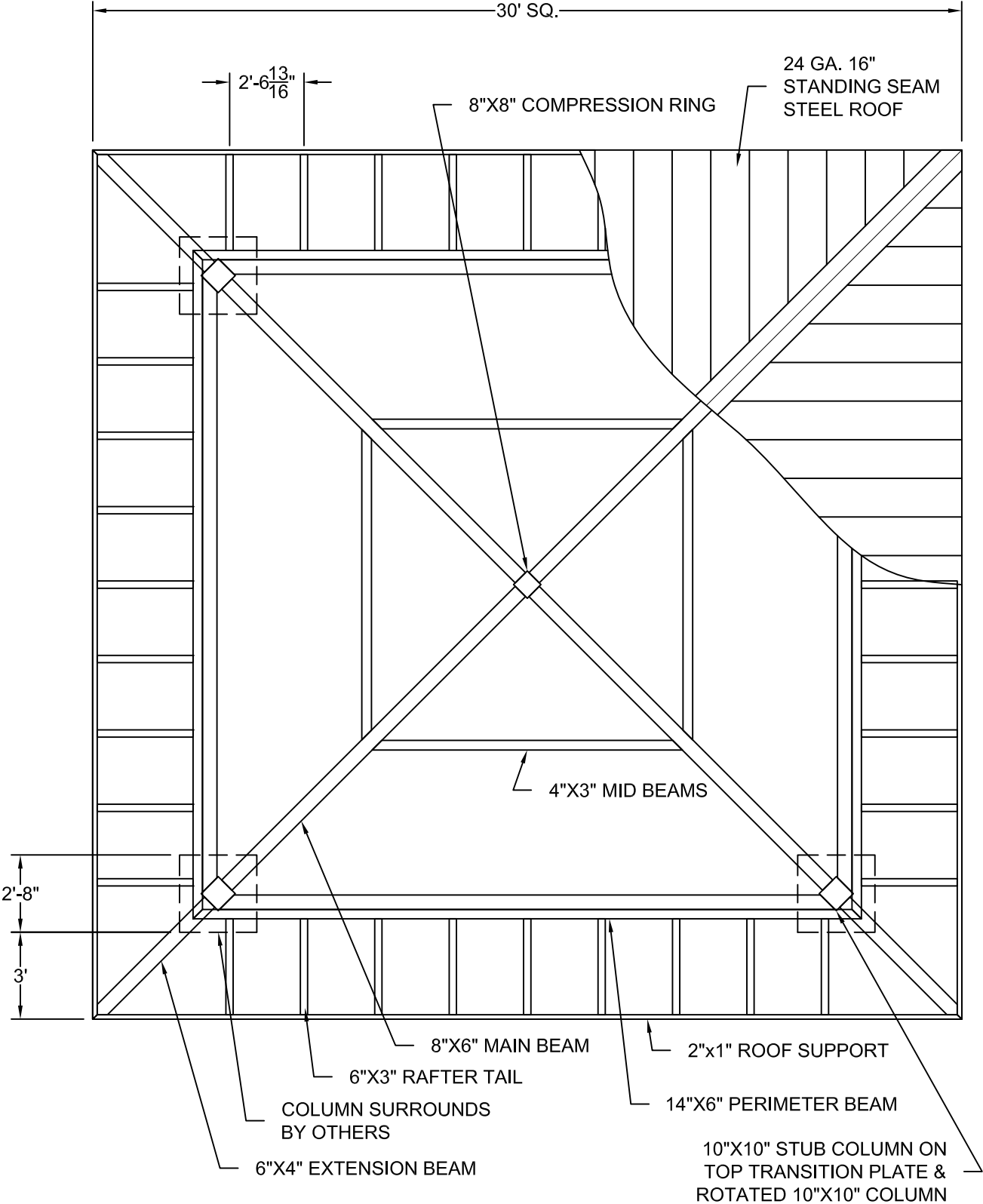
Roofing shall be 24 gauge 16" OC Standing Seam steel pre-cut and pre-finished with ribs running with the slope of the roof.

Trim shall be 24 gauge pre-finished to match roofing.

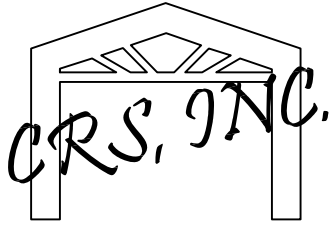
Open or welded "C" channel, "I" beams, "S" or "Z" purlins or angle iron shall not be allowed.



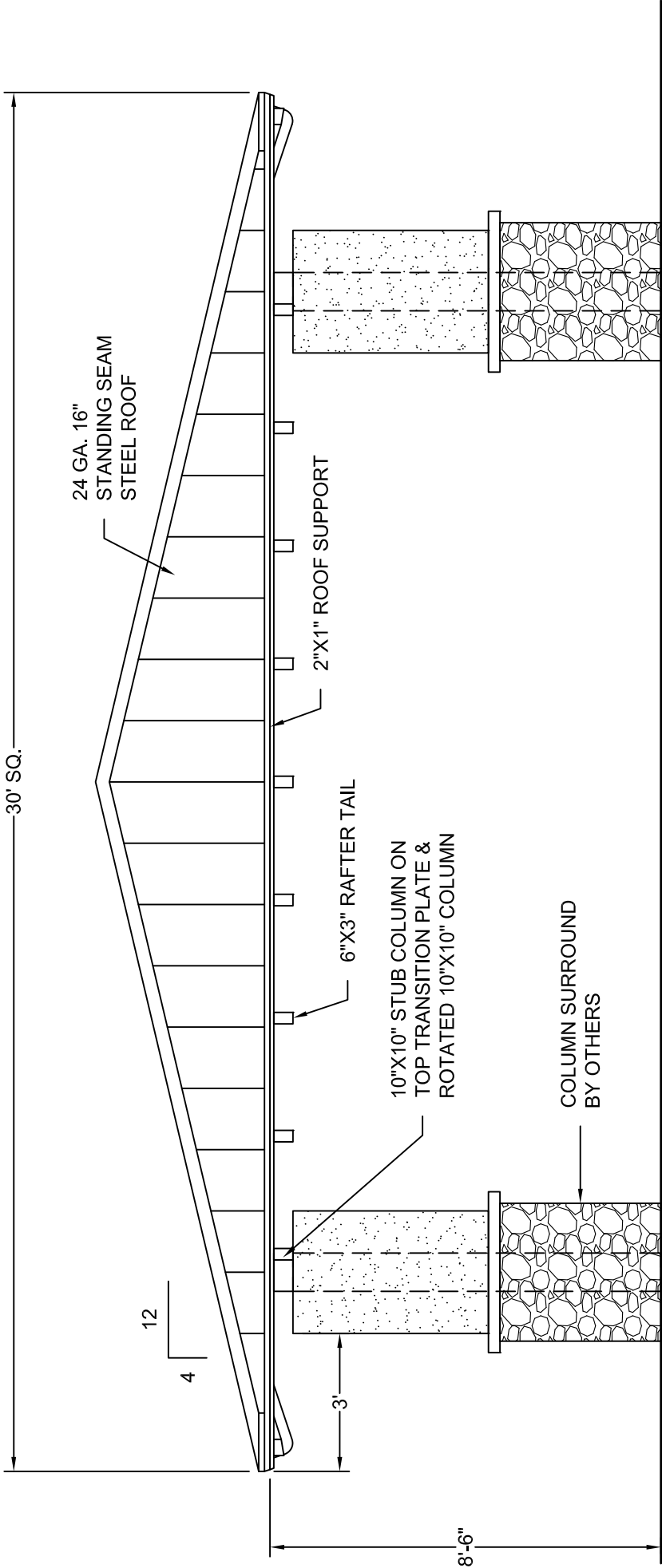
NOT FOR CONSTRUCTION



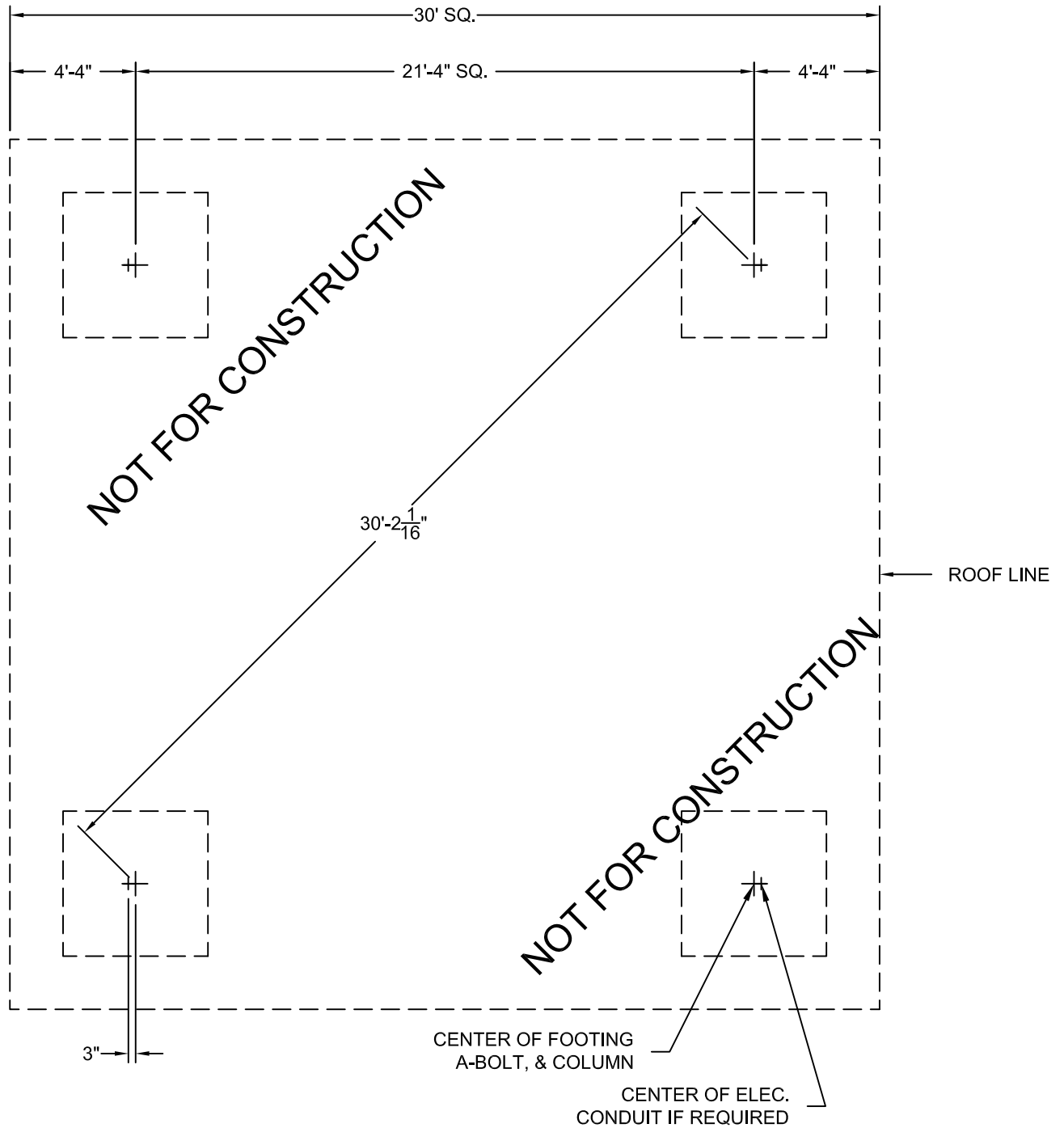
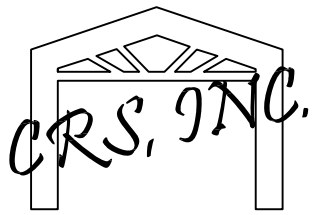
PLAN VIEW 30'X30' MESA MODEL
NTS



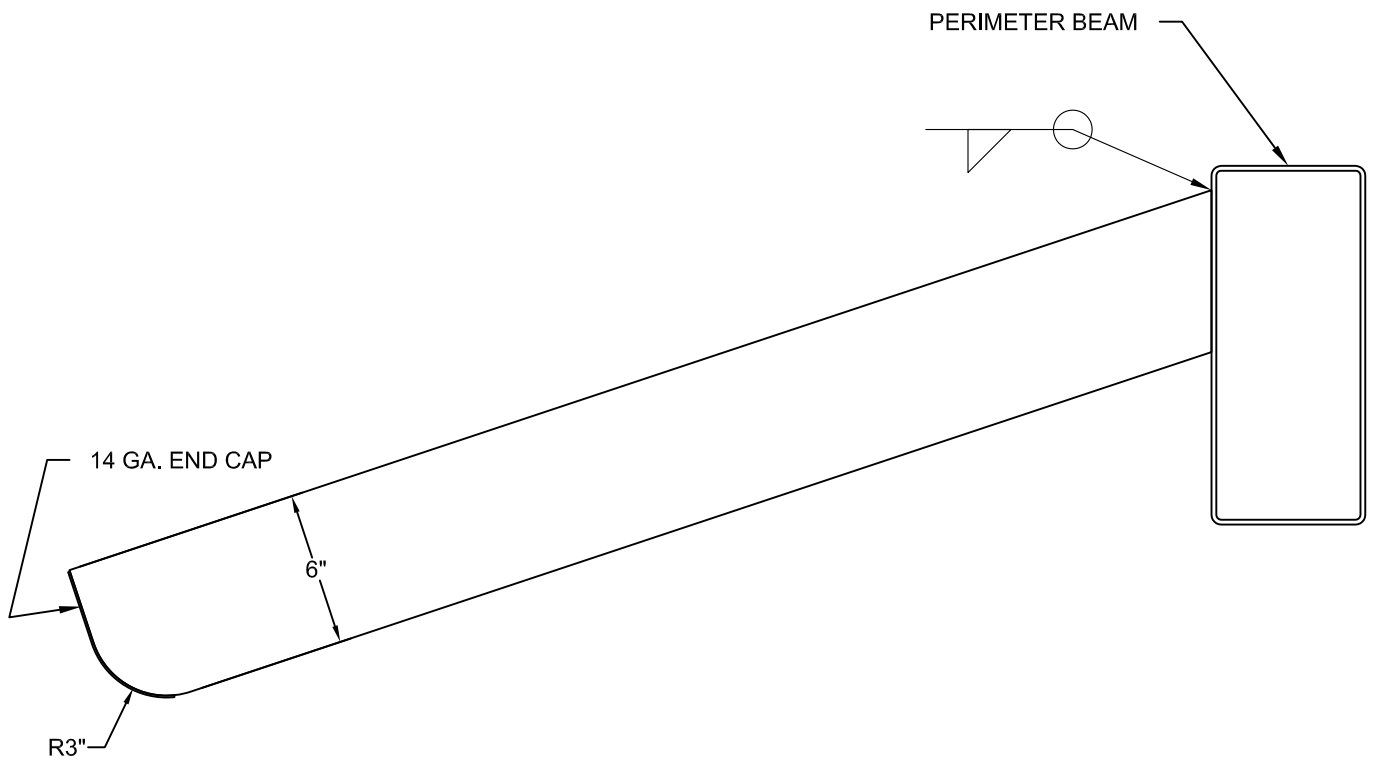
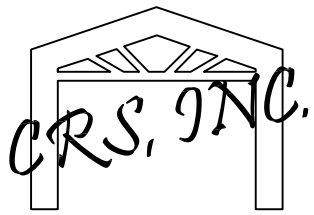
NOT FOR CONSTRUCTION



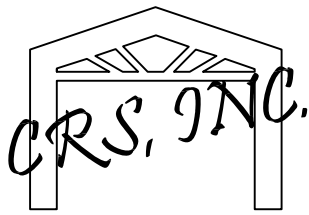
ELEVATION 30'X30' MESA MODEL
NTS



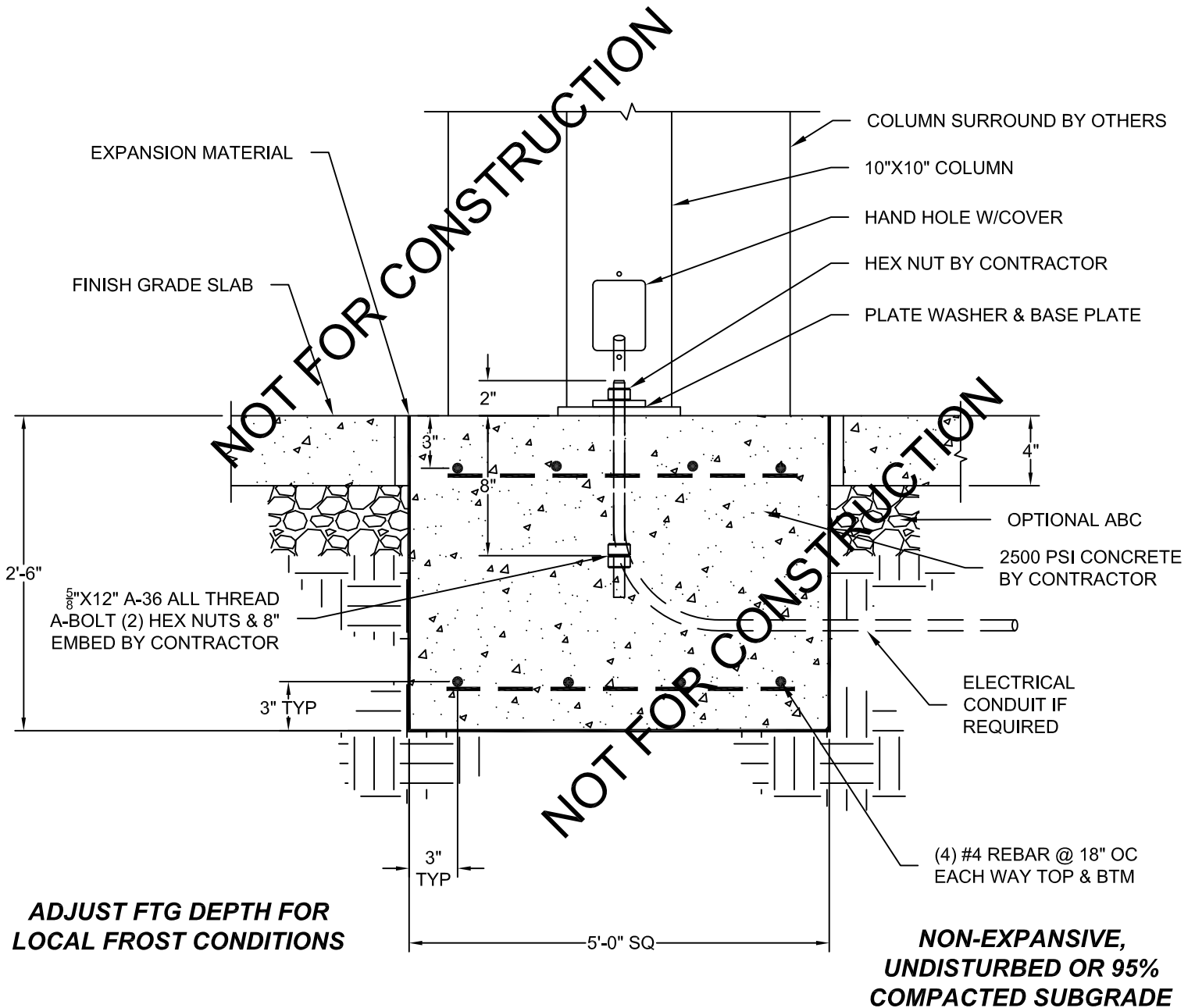
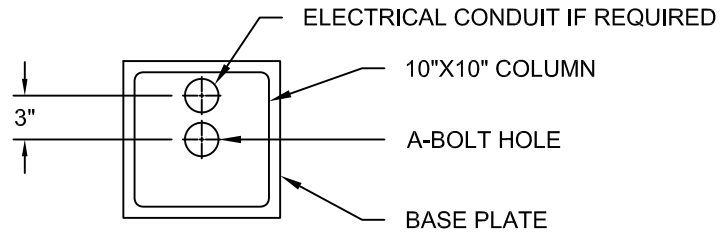
LAYOUT PLAN 30'X30' MESA MODEL
NTS



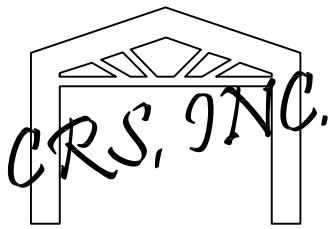
RAFTER TAIL 30'X30' MESA MODEL
NTS



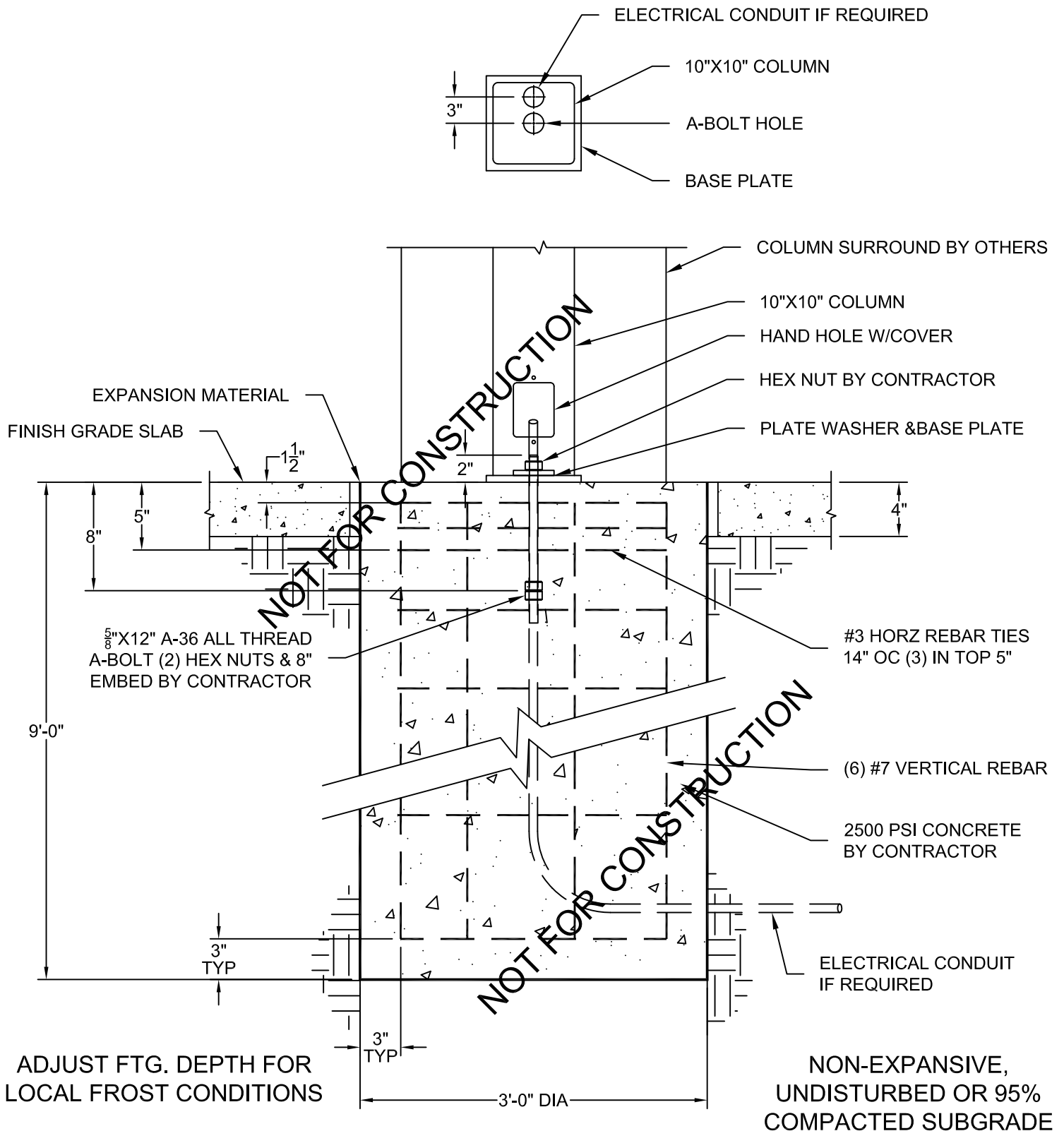
NOTE: FOR ILLUSTRATION ONLY!
FOOTING SIZE MAY CHANGE w/
STRUCTURAL ENGINEERING



SURFACE MOUNT SPREAD FOOTING
30'X30' MESA MODEL
NTS



NOTE: FOR ILLUSTRATION ONLY!!
FOOTING SIZE MAY CHANGE W/
STRUCTURAL ENGINEERING



FOOTING DETAIL 30'X30' MESA MODEL
SURFACE MOUNT CAISSON

NTS